

Family Resource Centers' Role in the Community Pathway: A focus on child welfare outcomes

Jordan Katti, PhD
Applied Survey Research
June 14, 2023



Spotlights on successful FRC initiatives:

- Birth & Beyond FRC Collaborative (Sacramento County)
- Pathways to Hope for Children FRC (Shasta County)
- Westminster FRC (Orange County)
- CFRA COVID Relief (Statewide)

"[The FRCs] are so close to the parents. The parents recognize them as **resources** and **trust** them. I think the hugest thing is the trust, and the trust is mutual."

~ CFRA Staff Member on the Value of FRCs as Partners



Spotlight on:

Birth & Beyond FRC Collaborative in Sacramento County

In 2020-21, Birth & Beyond directly served

6,575 parents/caregivers &

2,640 children ages 0 to 17

Average # of hours served: **5.4**

1,168 adults
received **Home
Visiting**

805 adults at
**Parenting
Education
Workshops**

1,943 families
received **Crisis
Intervention**

3,332 families
received
**SELS/Enhanced
Core
services**

Quasi-Experimental Design (QED)

Goal of the QED

To isolate the **impact** of receiving **8+ hours** of **B&B home visiting** by creating a statistically valid comparison group

Matching Strategy

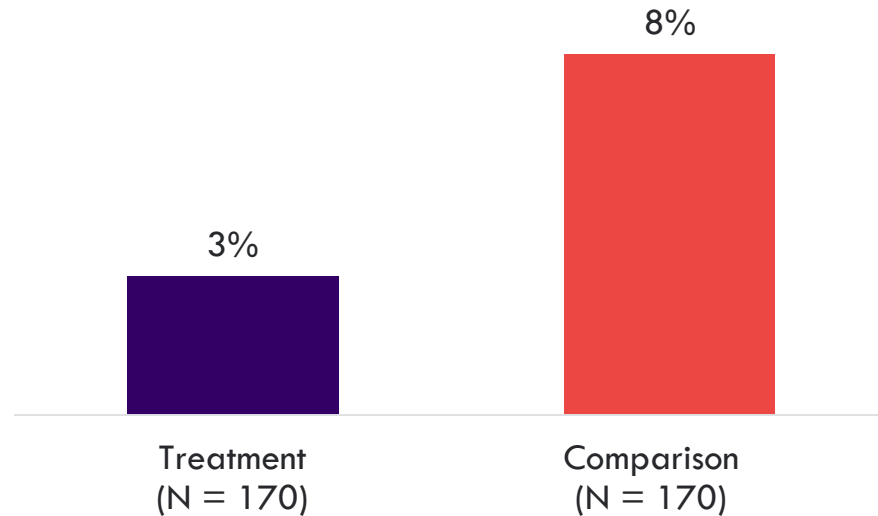
Propensity Score Matching based on a vulnerability index, including:

- Age 5 and under
- Non-White
- Male
- Substantiated Baseline
- High or Very High SDM Risk Level
- 1+ Prior CPS involvement

Quasi-Experimental Design CPS Outcomes

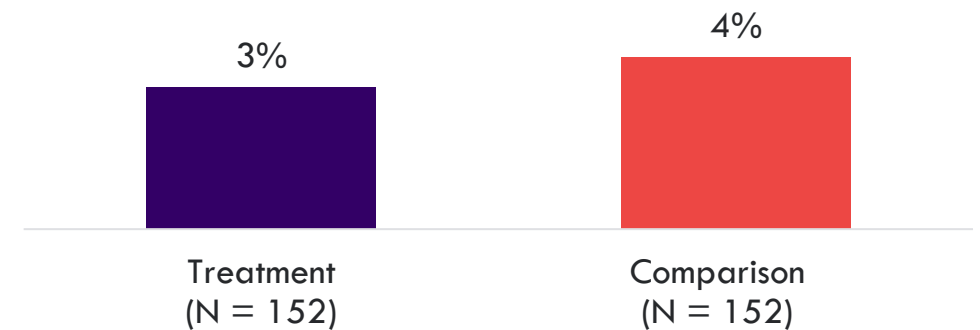
Ages 0 to 5

Children ages 0-5 receiving **eight or more hours** of Birth & Beyond home visiting were almost **two-thirds less likely** to experience substantiated recurrence compared with a matched countywide sample.



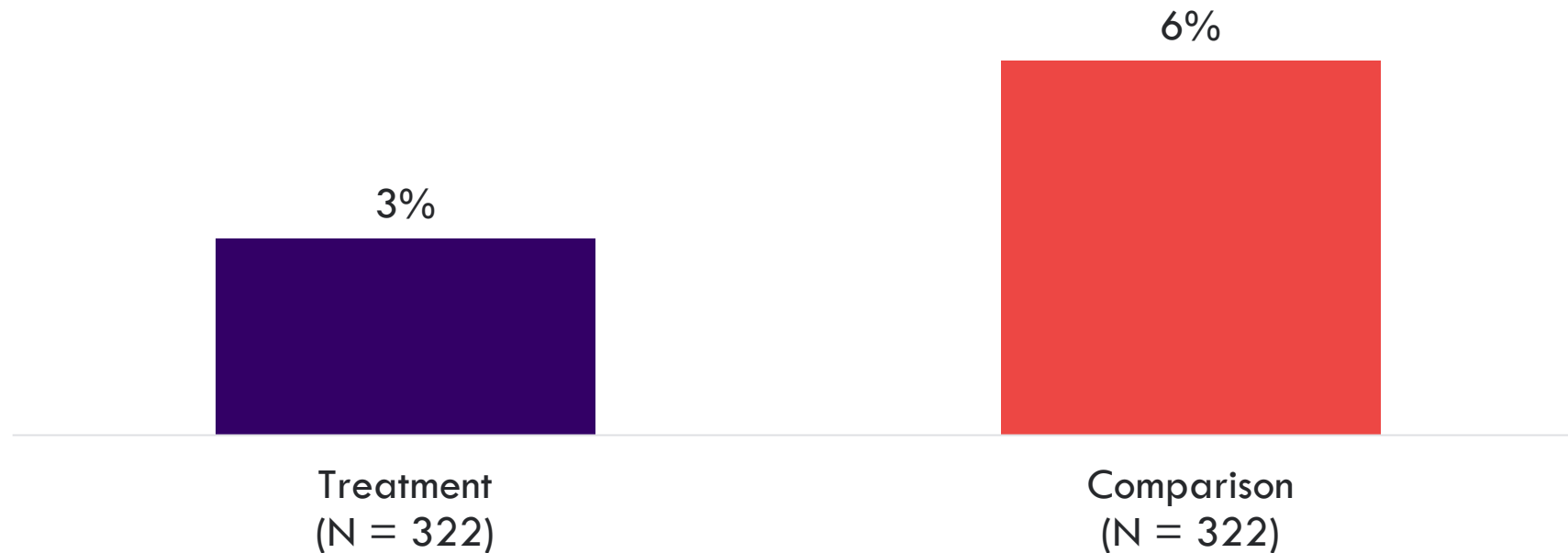
Ages 6 to 17

Children ages 6-17 receiving **eight or more hours** of Birth & Beyond home visiting were **one-quarter less likely** to experience substantiated recurrence compared with a matched countywide sample.



Quasi-Experimental Design CPS Outcomes: Ages 0-17

Children ages 0-17 who received **eight or more hours** of Birth & Beyond home visiting were **half as likely** to experience substantiated recurrence compared with a matched countywide sample.



Spotlight on:

Pathways to Hope for Children FRC in Shasta County

- Services provided:
 - Drop-in support
 - Case management
 - Parenting education
 - Job skills assistance
 - Material help (diapers and clothes)
- Evaluation included **147** parents
 - **67.5%** had **Adverse Childhood Experiences (ACEs) scores of 4 or higher**
 - **47%** identified as homeless

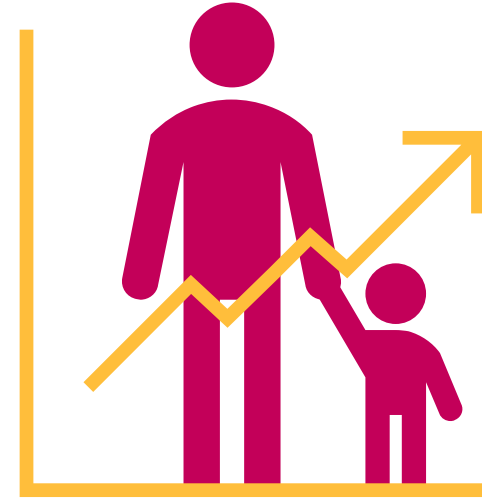


Spotlight on:

Pathways to Hope for Children FRC in Shasta County

Evaluation Results

- Hope Survey scores increased by **4.82** points.
- Progress toward treatment goals achieved by **89%** of parents.
- Parental stress improved by **15%**.
- Parent's well-being increased by **5.43** points.



Spotlight on:

Westminster Family Resource Center in Orange County

- In 2016 and 2017, WFRC participated in a quasi-experimental study to evaluate the return on investment of their services compared to the cost of child maltreatment.

In 2015, child abuse and neglect was estimated to cost **\$428 billion** nationwide.



A total estimated cost of **\$268,544** per person to society due to child maltreatment.



Spotlight on:

Westminster Family Resource Center in Orange County

- The rate of **substantiated child abuse** in WFRC-served areas was **significantly lower** compared to similar communities in Los Angeles County.
 - **21% lower in 2016** and **41% lower in 2017**.



More than
90 children
kept out of the child welfare system.



Spotlight on :

CFRA Response to COVID-19

- FRC COVID Relief Funds were distributed by CFRA at **unprecedented speed** to address family needs and maintain continuity of services and operations during the COVID-19 crisis.

With COVID-19 Relief Funds Distributed by CFRA from September 2021 through June 2022:

380 FRCs across **53** counties provided services

to **394,168** individuals

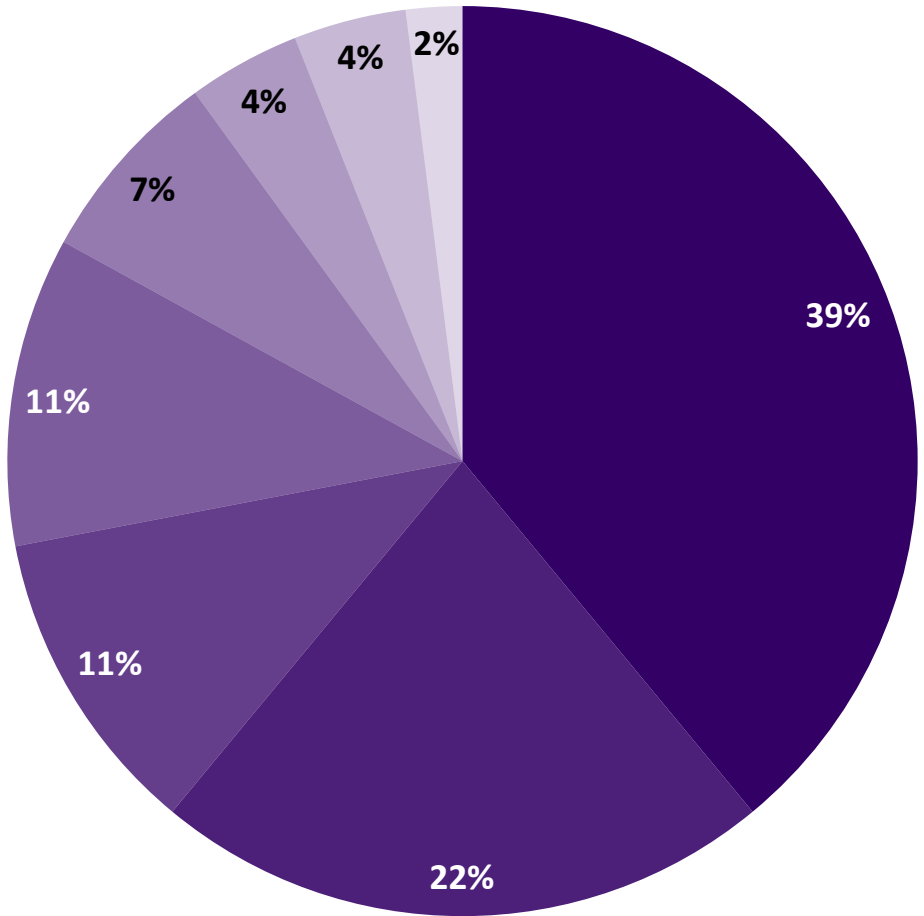
including **13,384** in the foster system

and **15,126** who are Native American/Tribal-Affiliated

Spotlight on: CFRA Response to COVID-19

During the COVID-19 pandemic, FRCs provided the following services thanks to COVID Relief Funds distributed by CFRA:

- Material Goods
- Parenting Resources
- Linkages with Local, State, and Federal Benefits
- Isolation Needs
- Support for Education and Distance Learning
- Mental Health/Counseling Services
- Support for Returning to Work/School



“[Family Resource Centers] are the cornerstone of healthy communities. I can even go so far as to say that they are the **lifeline**. Especially in rural communities... They're key to community vitality... It's a proven strategy to build protective factors, to **build community.**”

~ The Executive Director of an FRC Network that participates in CFRA



Picture obtained from El Sol Neighborhood Educational Center, used with permission