

Continuum of Care for Stepping Home

UCLA Team

Elizabeth Barnert MD, MPH, MS; Laura Abrams PhD, MSW; Eraka Bath MD

OYCR Community Board

December 16, 2022

PRESENTATION OVERVIEW

- 01 Introducing Step-Home model
- 02 Background and rationale for Step-Home Model
- 03 Step-Home Model pathways and definitions
- 04 Wrap-up and feedback

STEP-HOME MODEL

The **Step-Home Model** promotes healing and accountability of youth with serious charges by providing robust, developmentally-aligned, trauma-informed, therapeutic, strength-based care that supports youth in succeeding at 'home' or as close to home as possible.

Home and Community Healing Plan gives youth, families, and communities the opportunity to thrive. Although the model focuses on youth with serious charges, all youth adjudicated to out of home placement would likely benefit from the principles put forth by the model.

Youth receives serious charge



Youth Detention Facility
Prompt adjudication



Adjudication

- Diversion
- Dismissal
- Placement

Guiding Principle: Home with robust supports is the default response. All youth who can safely achieve goals of healing and accountability at least as well at home, if not better, should be placed at home.

Preferred Path

'Home'

Wrap-around Reentry Supports

Earned days in the community

Out of Home Placement

Cottage

Ranch

Secure Youth Treatment Facility

Last resort, developmentally-aligned, trauma-informed, therapeutic

Step-Home Model must act at every step of the way

Why 'Step-Home'?

Youth Incarceration Worsens Outcomes

- Does not reduce delinquent behavior
- Likely worsens young people's education and employment success
- Harmful to health and wellbeing into adulthood
- Exposes youth to maltreatment and abuse
- The intersectional disparities are unjust
- In sum, youth incarceration is **counterproductive**

Why Youth Incarceration Fails

- Not aligned with adolescent brain science
- Inherently, it is not trauma-informed
- Does not promote accountability for victim impact
- In sum, there is a mismatch between what youth and victims need for healing, and our current practices

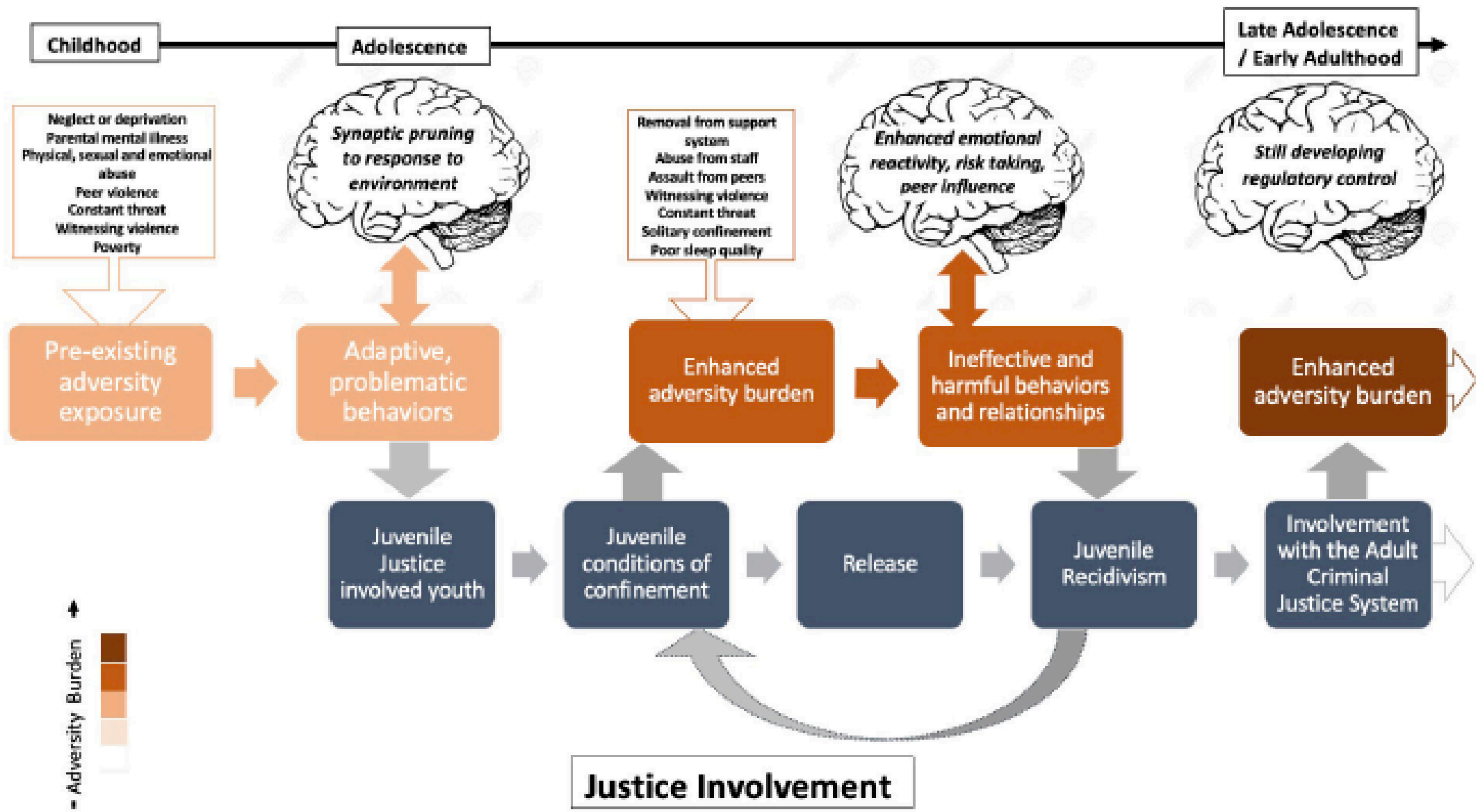


FIGURE 1
 Conceptual representation of youth adversity exacerbation in the juvenile justice system (JJS).

Alternatives to Confinement Work

- Community alternatives to confinement exist and have shown **equal or better outcomes** at lower cost
 - Examples: mentoring and credible messengers, family-focused therapy, wrap-around programs
- Confinement is not necessary to achieve healing and accountability, and likely impedes healing processes
- Confinement does not necessarily improve public safety. Strengthening youth, families, and communities improves public safety.

Step-Home Model: Purpose and Elements

Purpose of Step-Home Model

- To optimize **healing** and **accountability** of youth with serious offenses by providing robust, developmentally aligned, trauma-informed, therapeutic care that strengthens youth, families, and communities.
- Prioritizes service delivery at home post-adjudication whenever possible, rather than out-of-home placement. Detention and reentry services are also enhanced.

Step-Home Goals



Healing

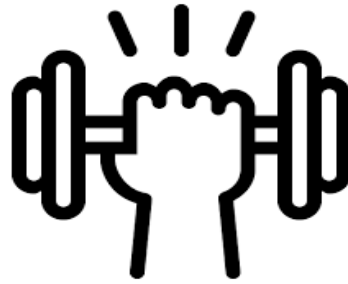
Accountability

Decrease
Intersectional
Disparities

Elements of Step-Home Model



Trauma-Informed and
Therapeutic



Strength Based



Developmentally
Aligned



Home-based

Robust Service Delivery

Robust Service Delivery

- **Robust**= defined as service delivery that achieves youth engagement to optimally meet youths' needs and promote accountability. Is accessible, with buy-in from youth and families.
- California can afford this for the ~1000 youth annually with serious charges. Doing so is feasible and worthwhile.

Robust Service Delivery

- Health
- Mental health
- Substance use treatment
- Social services such as housing, vocational programs, life skills training, credible messengers, universal basic income, and other programs with research evidence or community evidence of benefiting youth



Developmentally Aligned

Developmentally Aligned

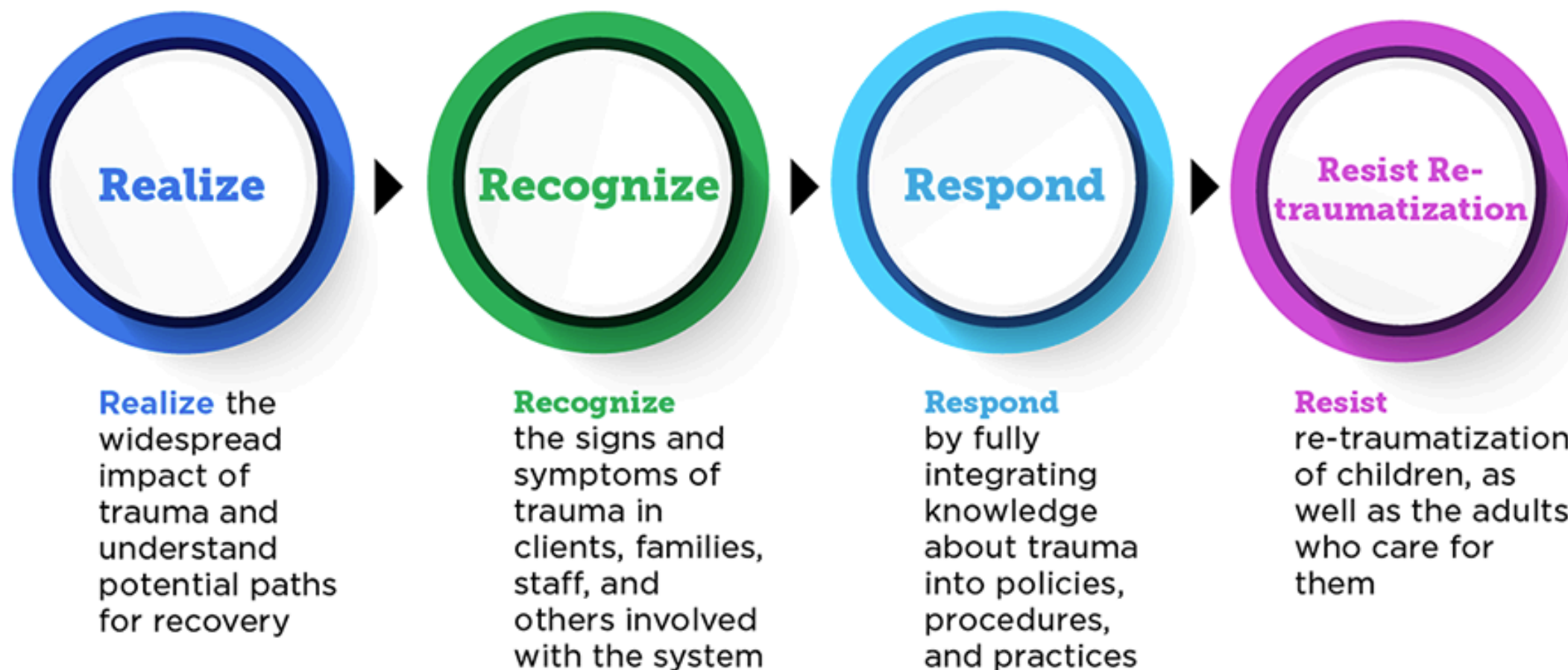
Developmentally aligned = methods that promote optimal development and meeting youth where they are. Best practices based on knowledge of how youth develop and mature.



For step-home: Keeping youth at home or close to home and supporting youth with providers and programs attuned to young people is key.

Trauma-Informed

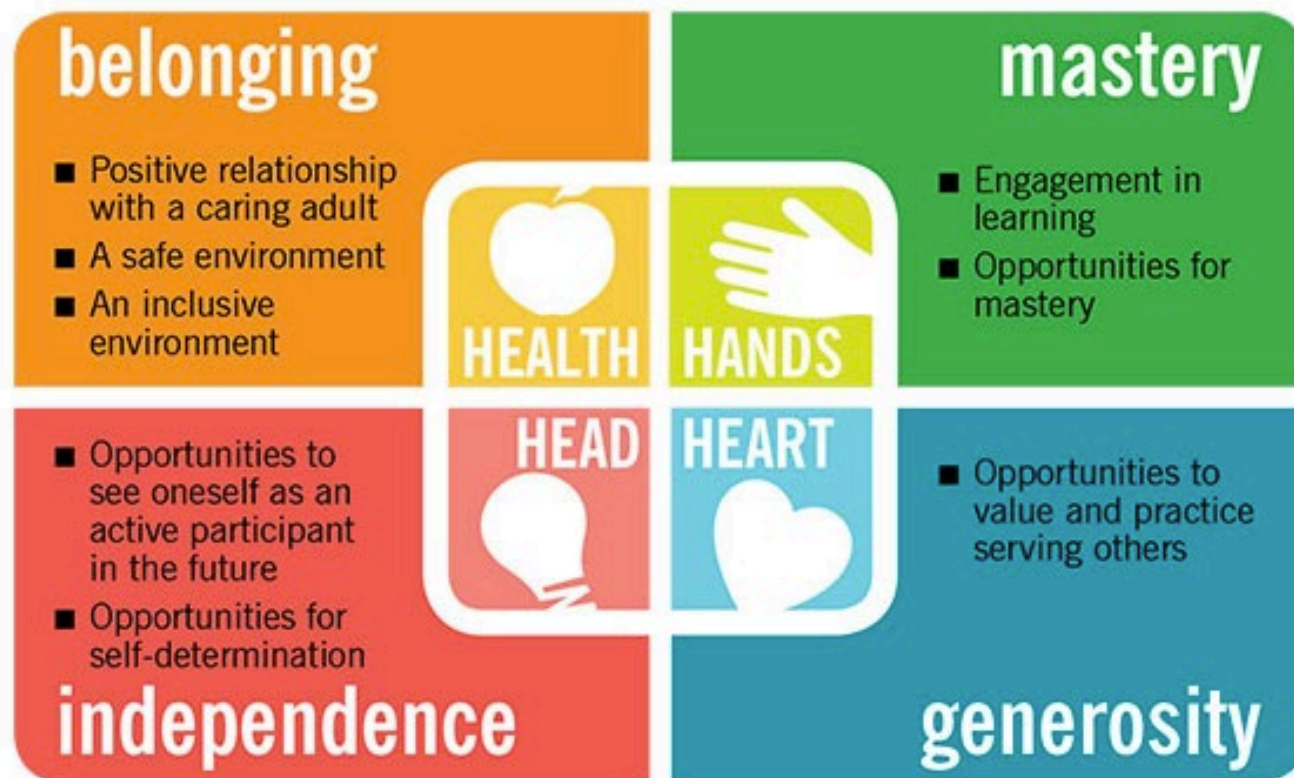
The Four Rs of Trauma-Informed Care



Strengthen Youth, Families, and Communities

Positive Youth Development to Build Assets in Youth, Families, and Communities

essential elements



Healing

Healing: Definition

- Health: “A state of complete physical, mental, and social well-being and not merely the absence of disease or illness.”
- Healing- is the process of restoring health
- Involves youth, family, and community



Accountability

Accountability: Definitions

- *For youth:* Recognizing what they have done and taking action to make amends to victims and the community
- *For the community:* Reinforcing youths' efforts to make amends by teaching them and volunteering in restitution and mediation programs rather than sending them out of the community
- *For juvenile legal system:* Restructuring "to hold itself responsible for outcomes . . . and to devise a carefully calibrated continuum of responses to juvenile crime."



Accountability: Strategies

Strategies that lead to restorative accountability goals:

- Focus on repair of harm to the victim
- Provide a process for making amends to the community
- Provide a process for greater understanding of how the incident affected others
- Offer a meaningful way for the juvenile to take responsibility for the actions
- Encourage apology or expressions of remorse
- Involve the victim and the community in determining the accountability measures



Step-Home Model: Put Together

STEP-HOME MODEL

The **Step-Home Model** promotes healing and accountability of youth with serious charges by providing robust, developmentally-aligned, trauma-informed, therapeutic, strength-based care that supports youth in succeeding at 'home' or as close to home as possible.

Home and Community Healing Plan gives youth, families, and communities the opportunity to thrive. Although the model focuses on youth with serious charges, all youth adjudicated to out of home placement would likely benefit from the principles put forth by the model.

Youth receives serious charge



Youth Detention Facility
Prompt adjudication

Guiding Principle: Home with robust supports is the default response. All youth who can safely achieve goals of healing and accountability at least as well at home, if not better, should be placed at home.



Adjudication

- Diversion
- Dismissal
- Placement



Preferred Path

Out of Home Placement

Cottage

Ranch

Secure Youth Treatment Facility

Last resort, developmentally-aligned, trauma-informed, therapeutic

Earned days in the community

Wrap-around Reentry Supports

'Home'

Step-Home Model must act at every step of the way



Home and Community Healing Plan

- Youth provided **Home and Community Healing Plan**
 - **Emphasis on treatment (health focus)**
 - **Resources and attention to supporting families and communities, alongside the youth, in order to optimize healing and accountability**
- Paradigm shift of providing state-of-the art wrap-around reentry supports post-adjudication at 'home' whenever possible

Step-Home: In-Reach Principles

- Bring into facilities, either physically or virtually, **community members** – family members, teachers, community mentors, therapists, and healthcare providers – and **community resources** – such as guidance counselors or employers
- Allow youth to build relationships during detention or incarceration that will help jumpstart their reentry
- Community-led, enrich community resources
- Involve Lived Experience Experts

Wrap-up

Synthesis

- The Step-Home model prioritizes sending youth with serious offenses 'Home' with robust, developmentally aligned, trauma-informed, strength-based service delivery as soon as possible post-adjudication, rather than to provide services in carceral settings long-term. Carceral settings should be used for the minimum duration.
- The goal of the Step-Home model, unlike traditional punitive models, is to promote optimal healing, while still investing in youth and community accountability and safety
- Regardless of where youth are situated in the Step-Home model post-adjudication, it is crucial to provide youth and families with robust reentry supports that strengthen youth, families, and communities

Feedback and Next Steps

- Overall reaction to the model?
- Use of the term “Step-Home”?
- Who to solicit input from?
- Other comments or suggestions?

Thank you!

We thank: UCLA students Molly Hunt, Ed Mei, Joyce Lee; the Rally Team, especially Rodrigo Gouveia; and our OYCR partners!

Contact: ebarnert@mednet.ucla.edu