

# Child Welfare Priority Access to Services and Supports (PASS)



## A Resource Document for Parole Agents



Priority Access to Services and Support (PASS), is a joint initiative between multiple state and county agencies and the California Child Welfare Council. The California Department of Corrections and Rehabilitation (CDCR), has been selected to serve as a lead state agency in an effort to identify and develop strategies within our system to assist with PASS efforts to prioritize services for children in the state foster care system.

This document contains general information on the PASS initiative and key steps parole agents can take to link parolees to PASS priority services in an effort to fulfill child reunification court orders.

- The department has identified a shared population between parents, who are either incarcerated or on active parole, and their children in foster care with a reunification plan.
- The department's commitments to the PASS initiative includes increased awareness of parole agents regarding parolees who have child reunification court orders, and to ensure priority access is given through linkage to PASS service partners in the community.

### What is the Child Welfare Family Reunification Plan?

The family reunification plan is a component of Child Welfare Services that focuses on children who have been removed by court order and placed in foster care. The reunification plan consists of services made available to the parents, which include but are not limited to: *Counseling, emergency shelter care, substance abuse treatment, employment/job readiness, domestic violence intervention, parental education and household management.*

If the parent does not complete the reunification plan within the time frame designated by the Juvenile Dependency Court, the court will determine permanent placement for the children. Linking parolees with the services and support they need is time sensitive. This can strengthen their commitment to stay out of prison.

### The benefits of PASS...

PASS provides timely access to targeted services and support for families who have had a child removed and placed in foster care. *The ultimate goal of priority access services is to increase family reunification for parolees and their children.*

Turn the page to see the key steps parole agents can take to implement PASS and help parolees safely reunify with their families.

# Child Welfare Priority Access to Services and Supports (PASS):

## STEP-BY-STEP GUIDE FOR PAROLE AGENTS

During the initial and/or comprehensive interview, as well as any other face to face contact with a parolee, the parole agent can take into account **court ordered documents from the Juvenile Dependency Court.**

*The steps below can serve as a guide to assist parolees that have Juvenile Dependency Court ordered documents and/or children in foster care or in the process of being placed into foster care.*



### 01 IDENTIFY IF PAROLEE HAS COURT ORDERED DOCUMENTS IN FILE

- Review parolee case file for court-ordered 'active' reunification plan, usually located within the court order documents from the Juvenile Dependency Court.
- Active reunification plans are time sensitive and must be completed by the dates specified on the court ordered documents.

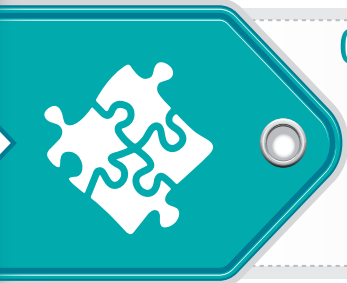
*\*Tip: The reunification plan may also be identified as 'dependency court report/case plan'.*



### 02 ASK PAROLEE ABOUT COURT ORDER DOCUMENTS IF NOT IN FILE

- Ask parolee if he/she has a copy of the court orders from the Juvenile Dependency Court; these documents do not always make it into the parolee case file.
- If a parolee has a court-ordered reunification plan, he/she is aware of plan and may be able to provide the agent details if the question is asked of them.

*\*Hint: While incarcerated, parolee may have attended a dependency court hearing for their child(ren).*



### 03 COLLABORATE WITH PAROLEE & CHILD-WELFARE SOCIAL WORKER

- Obtain name and contact information of child welfare social worker from court ordered documents and/or parolee.
- Contact social worker and discuss: Reunification plan details, services needed by parolee, available providers and preparation needed to access priority services.

*\*Tip: Meetings facilitated by the parole agent should always include parolee.*



### 04 PROVIDE PAROLEE CONTINUOUS SUPPORT FOR PASS

- Collaborate with the parolee to create a goals and progress report which includes the completion of conditions in accordance with the Juvenile Dependency Court order.
- Collaborate with the county child welfare worker, service providers, and the parolee to adjust services as needed during the duration of the reunification plan.

If you have reason to believe a parolee has an open child welfare case, offer to facilitate contact with the designated child welfare agency to verify whether or not his or her child is a dependent of the Juvenile Dependency Court.



*Need help? Questions?*

**Email: [CDCR-DRP-PASS-Help@cdcr.ca.gov](mailto:CDCR-DRP-PASS-Help@cdcr.ca.gov)**

 CALIFORNIA CHILD WELFARE COUNCIL  
*Child Welfare Priority Access to Services and Supports (PASS)*

