



Mission: Our mission at Kindful Restoration is to facilitate recovery and reintegration for individuals affected by addiction, dysfunction, and trauma. Using our Kindness Tools to guide interactions with mindfulness and kindness, we provide comprehensive support both inside correctional facilities and in outpatient settings. We focus on nurturing physical, social, mental, and emotional well-being, offering tailored counseling, mindfulness skills, kindness tools, and enhancing life skills. Our approach creates a supportive environment that prioritizes kindness, aiding in the healing and successful transition of participants who have been involved with the justice system.

Vision: Kindful Restoration envisions a future where individuals overcome the cycles of addiction and incarceration. With our pioneering Kindness Tool, we aim to infuse every interaction with empathy, mindfulness, and kindness, empowering individuals for a dignified recovery and successful reintegration. Our vision is to be a beacon of hope and healing, fostering resilience and personal growth, and transforming lives and communities through the power of kindness.

Kinder Prisons, Kinder Communities, Kinder People

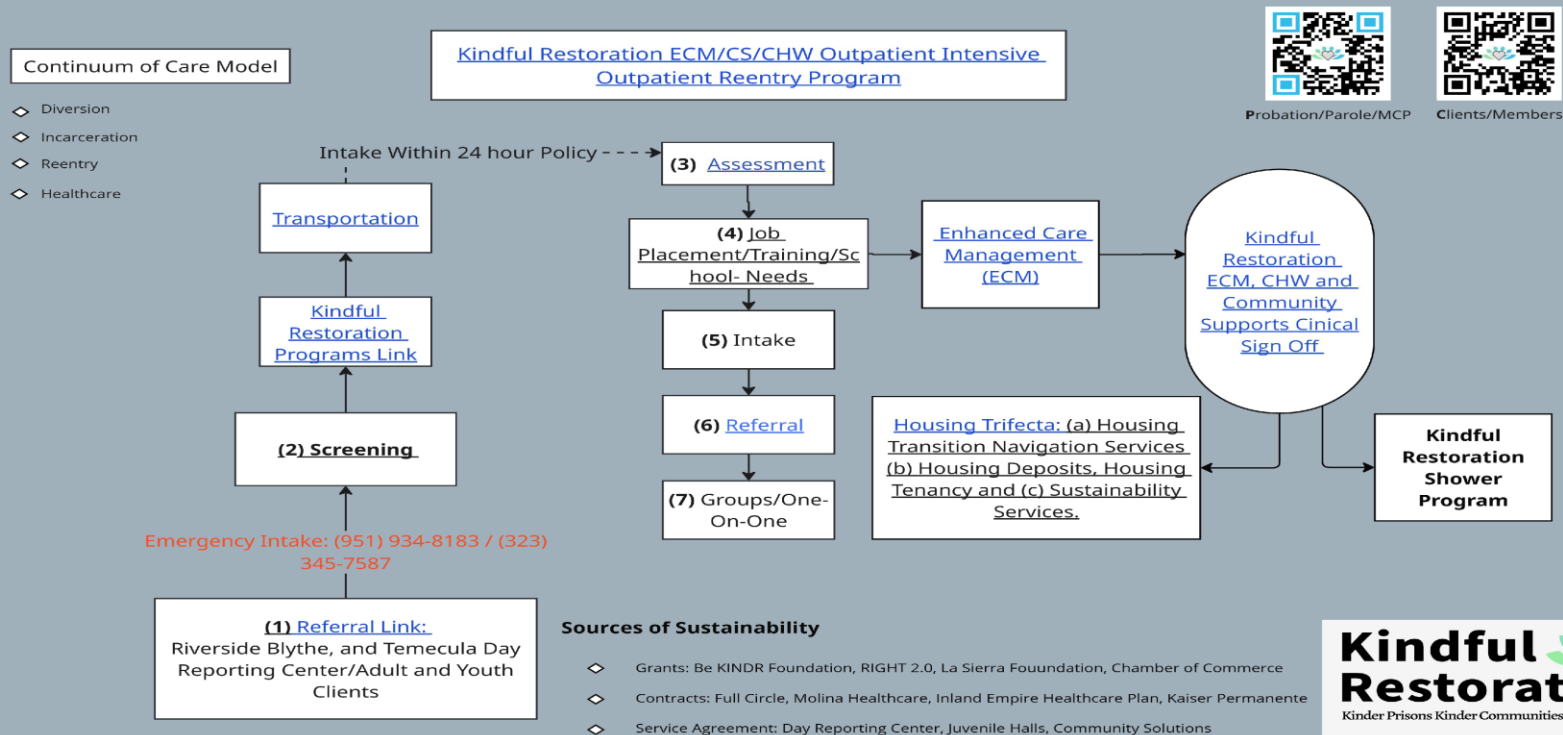


Transformative Kindness

THROUGH MINDFULNESS

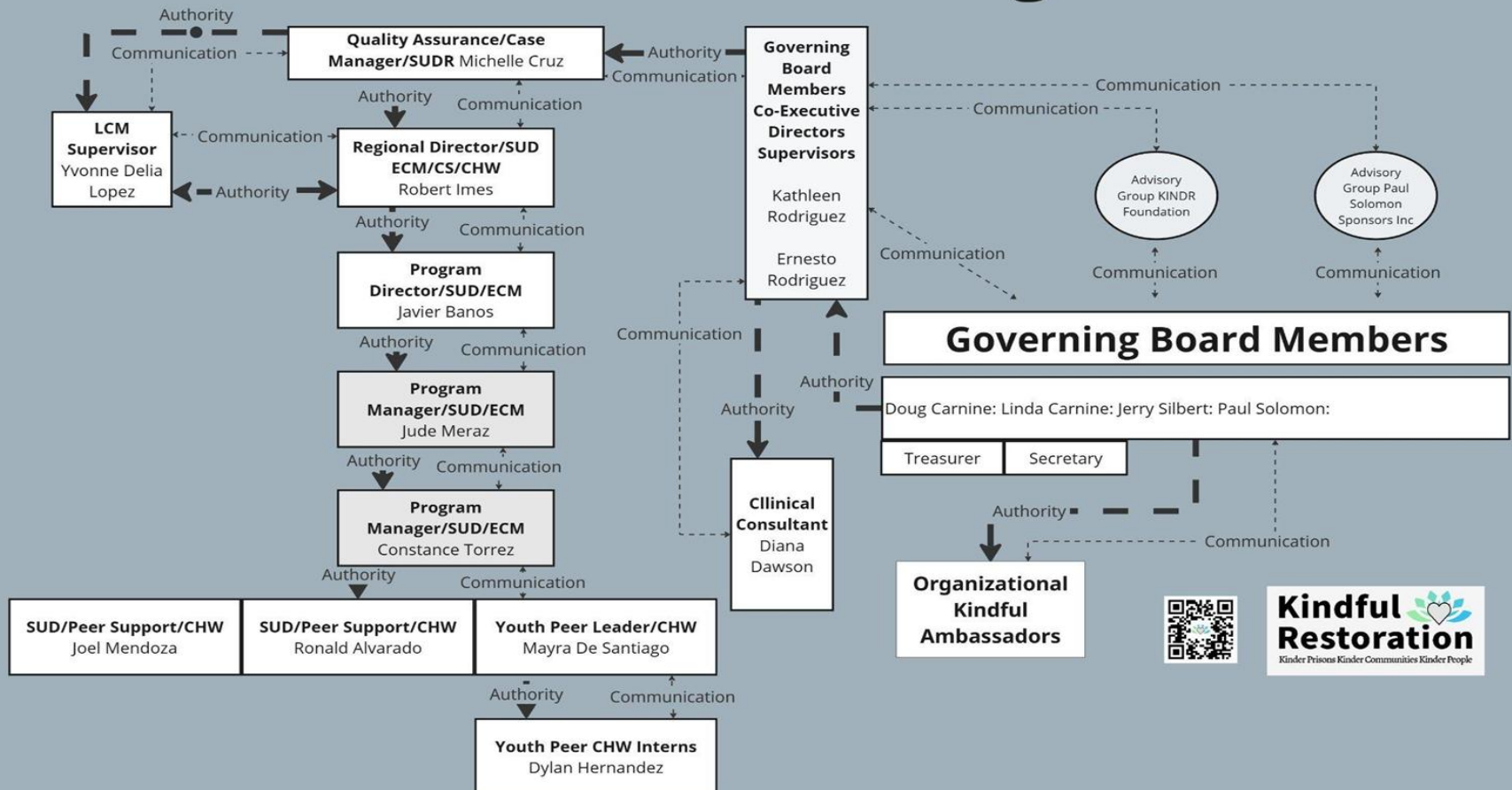


Kindful Restoration Riverside, San Bernardino, San Diego, Los Angeles, Sacramento Counties Youth & Adult Model



Expand Your Reach of Kindfulness

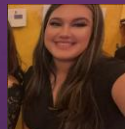
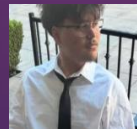
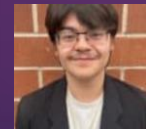
Kindful Restoration Table of Administrative Organization



Expand Your Reach of Kindfulness

Contracts Since CBI Grant

- ▶ Riverside Probation County Contract(2024-present)
- ▶ California Life Center Youth Workforce Development (2025-present)
- ▶ Riverside County Workforce Development (2024-2025 3 months)
- ▶ Community Solutions M.A.P. (2024-present)
- ▶ Managed Care Plans: Molina Healthcare, Inland Empire Health Plan, Kaiser, Blue Shield, Health Net
- ▶ Full Circle Health Network Contract
- ▶ Health Net, Independent Living Systems
- ▶ Inland empire JI provider
- ▶ UCLA Research Reentry Project Grant



Key Team Members

Kathleen Rodriguez:
Executive Director of
Operation

Ernesto Rodriguez: Executive
Director of Program
Development

- In 2023, we had 4 Staff including Leadership.
- Today 2026, we have 17 Staff.
- In 2023, we had on e Facility.
- Today 2026, we have two Facilities and with an opportunity to obtain a county building.

Outcomes

Healthcare

Age Group	Age Range	Patient Count
Youth	0 – 17 years	20
Transitioning Youth	18 – 27 years	18
Adult	28+ years	200
Total		238

Outpatient

Age Group	Age Range	Patient Count
Youth	0 – 17 years	43
Transitioning Youth	18 – 27 years	60
Adult	28+ years	236
Total		339

Our Happy Graduates

participation with the INSIGHT group facilitated by Kindful Restoration found immense value and personal growth. One aspect that deeply resonated with me was the group's ability to draw connections from childhood experiences to adulthood, digging into root causes and providing insights that have profoundly impacted my understanding and journey



J. Banos
Released 2023

Impact and Success Stories

Examples of Impact: Testimonials and statistics on reduced recidivism.

Success Stories: Personal stories of transformation and reintegration.

Connect with Kindful Restoration



Visit our website at
www.kindfulrestoration.com



Call us at (951) 404-0856



Scan the QR code