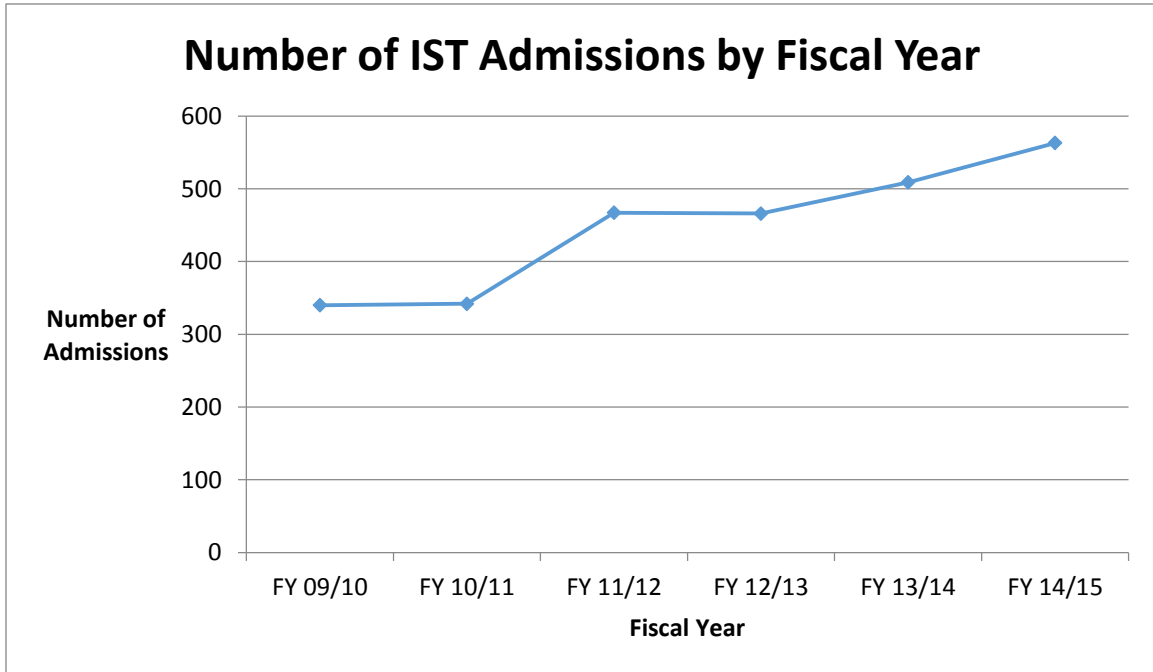


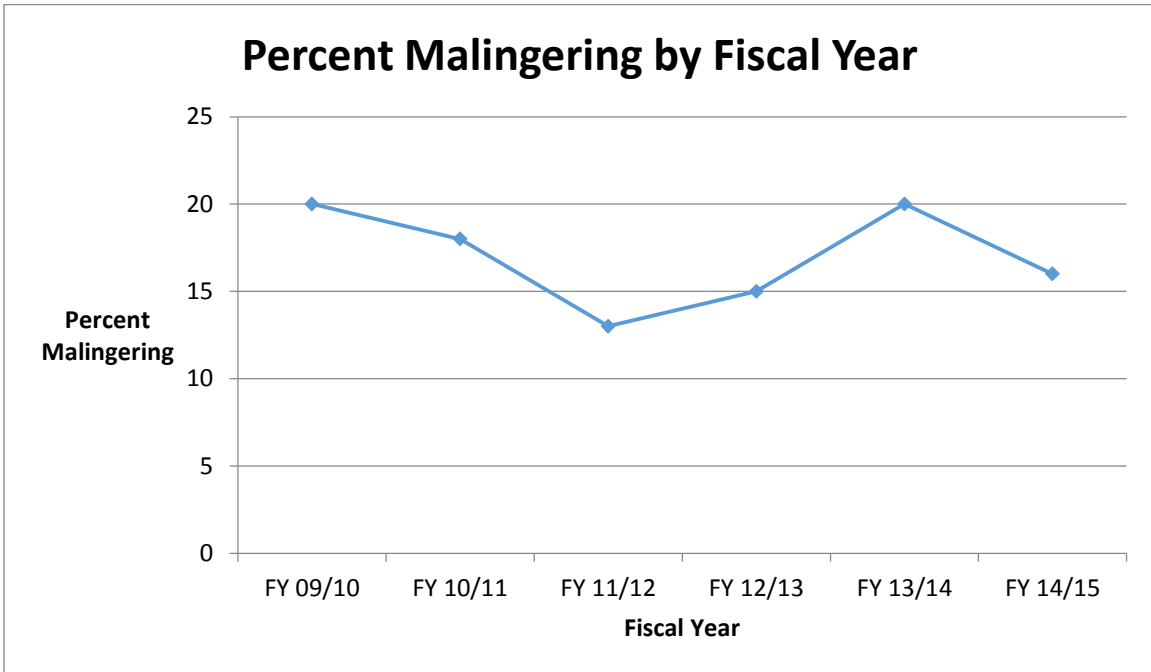
IST Population Growth Review of UC Davis IST Research Data at DSH-Napa

Number of DSH Napa IST admissions by Fiscal Year:

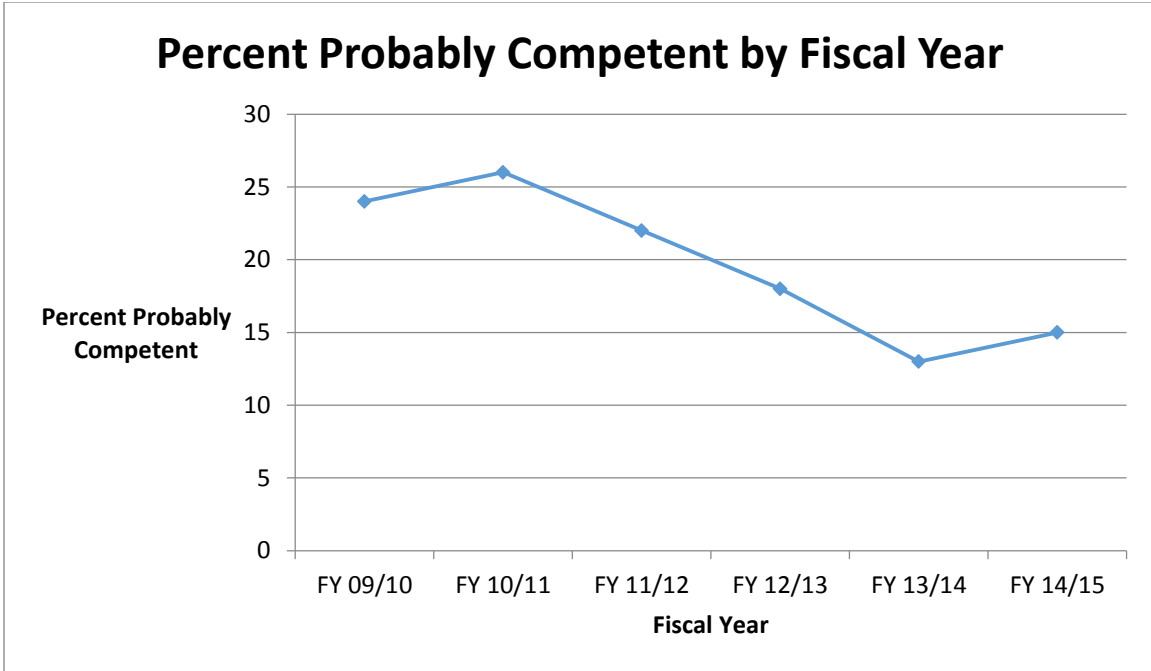


Screening Assessment Data

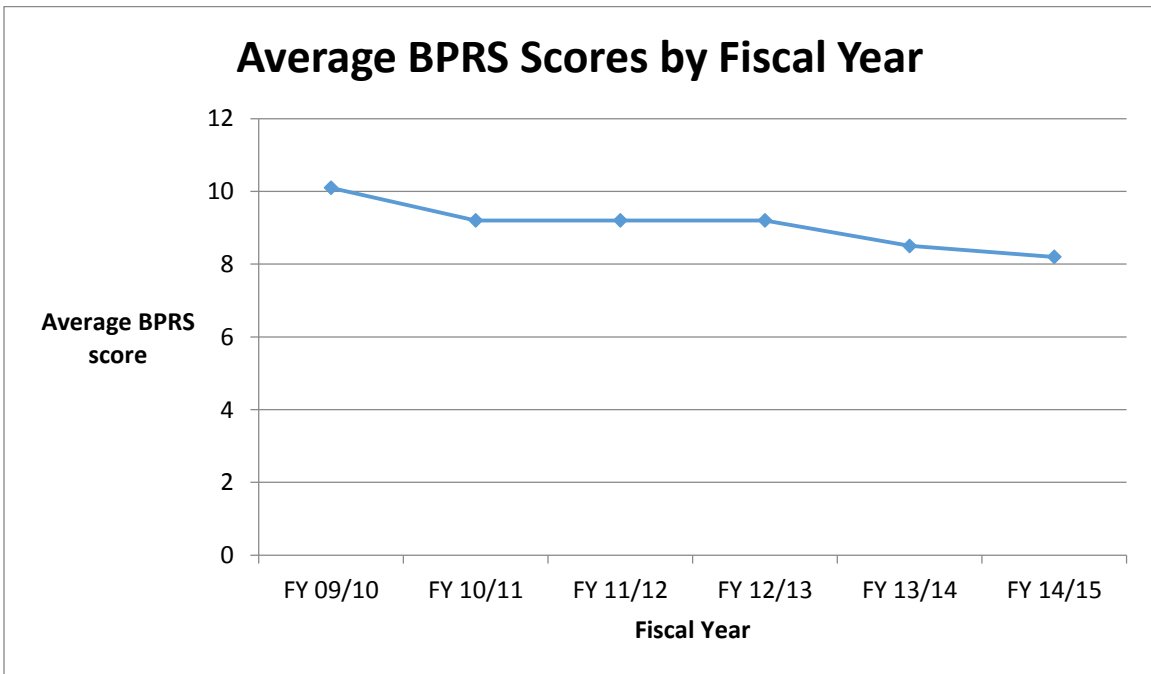
At DSH-Napa, UC Davis has conducted screening assessments on admission to evaluate malingering and competence. As of April 4, 2016, 2636 admissions have been evaluated. Of these, 17% were believed to be malingering and 18% were admitted as probably already competent. The following three graphs depict changes over time by fiscal year of admission.



These data indicate that the percentage of patients admitted as possibly malingering has not changed.



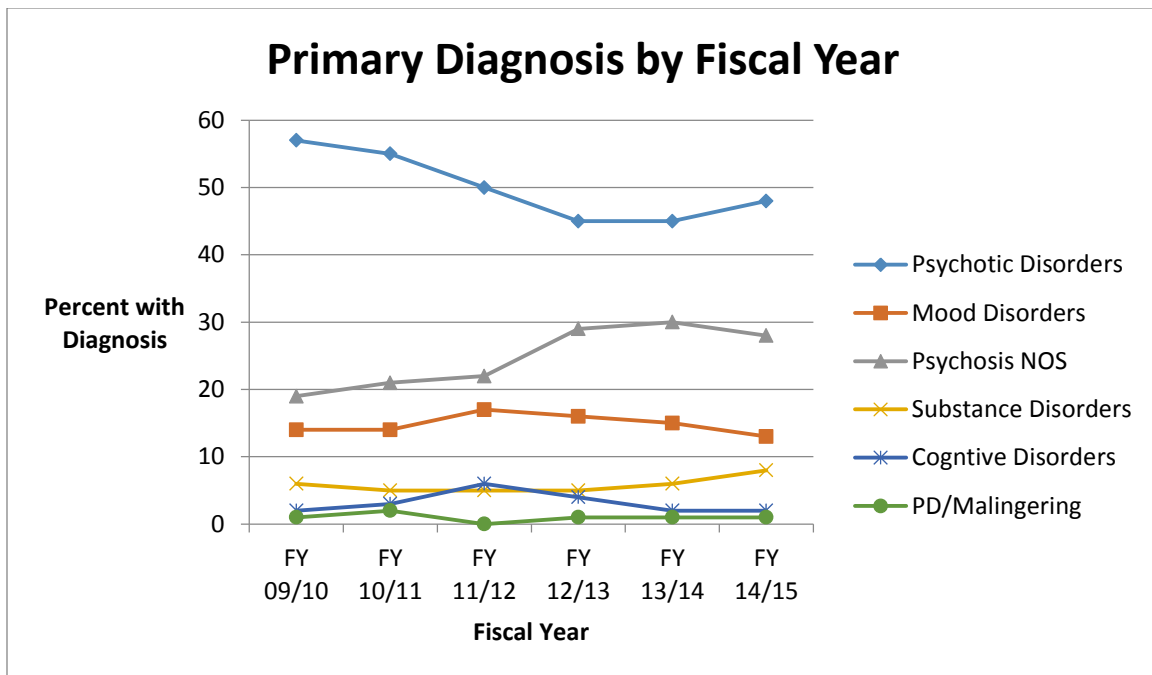
The percent admitted as probably already competent has decreased over time. This suggests that a larger percentage of patients were admitted with severe mental illness. The BPRS (Brief Psychotic Ratings Scale) measures symptoms severity. The following graph depicts the change in BPRS scores over time (higher scores = more psychotic symptoms).



This graph shows that there has been a very slight decrease in BPRS scores over time. Therefore, it appears we are getting a larger percentage of psychotic patients, but they are not individually more psychotic over time.

Primary Diagnoses Data

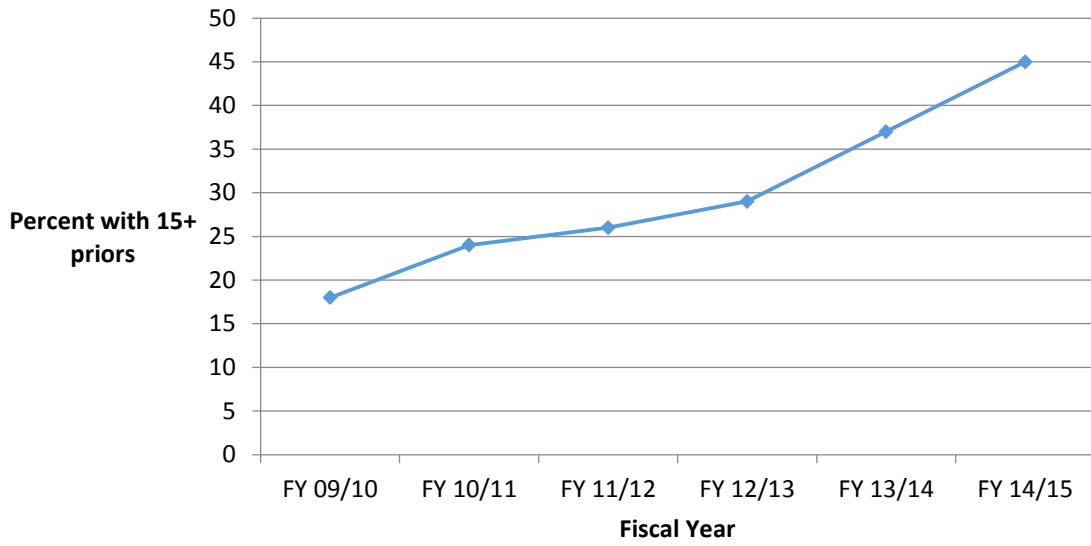
To look at types of admissions, we examined primary diagnosis one week after admission (after admission assessments were completed). Diagnoses were collapsed to look at trends: schizophrenia, schizoaffective disorder and delusional disorder were combined as psychotic disorders; major depressive disorder and bipolar disorder were combined as mood disorders, substance disorders. Finally, personality disorders and malingering were combined. Cognitive disorders included both intellectual disabilities and dementia disorders. The following graph illustrates the changes over time.



Arrest History Data

Criminal arrest history is an important variable in type of admissions, as it may reflect the sophistication of the patient. The following graphs depicts the change over time in the criminal arrest history of admissions at DSH-Napa and the percent of patients that have been previously determined to be IST.

Percent with 15+ Prior Arrests by Fiscal Year



Percent with Prior IST by Fiscal Year

